

-1.08 0 1 2 3 4 5 6 7 8 9 10 11 12 13 14 15 16 17 18 19 20 21 22 23 24 25 26 27 28 29 30 30.65

GENERAL CONSTRUCTION NOTES:

THIS GENERAL CONSTRUCTION DRAWING MUST BE READ TOGETHER WITH THE FOLLOWING DRAWINGS:

- LAMINATING SPECIFICATION DWG.NO: 98-220
- CONSTRUCTION CROSS SECTIONS DWG.NO: 98-210
- CHAINPLATE DETAILS. DWG.NO: 98-240
- CROSS BEAM DETAILS DWG.NO: 98-245
- RUDDER & STEERING DETAILS. DWG.NO: 98-250 TO 98-253
- DOOR DETAILS. DWG.NO: 98-260
- FOR OTHER EXTERIOR DETAILS AND POSITIONS CHECK RELEVANT DRAWINGS.

GENERAL LAMINATING SPECIFICATIONS:

RESIN TO BE USED
 POLYESTER RESIN, NCS 491 ISOPHALIC (LLOYDS APPROVED)
 OR SIMILAR QUALITY.

GLASS TO BE USED:
 BI-AXIAL 566 & 350 Gr/M2 & CSM 225 Gr/M2 AS SPECIFIED.
 IF ALTERNATIVE REINFORCEMENT USED, THE TOTAL GLASS WEIGHT IN GR./M2 AS GIVEN IN LAMINATING SPECIFICATIONS SHOULD REMAIN THE SAME.

CORE TO BE USED
 TERMANTO P.V.C. FOAM, 25 mm THICKNESS.
 MARINE MAHOGANY PLYWOOD, 24 mm THICKNESS = 2 x 12 mm THICKNESS.

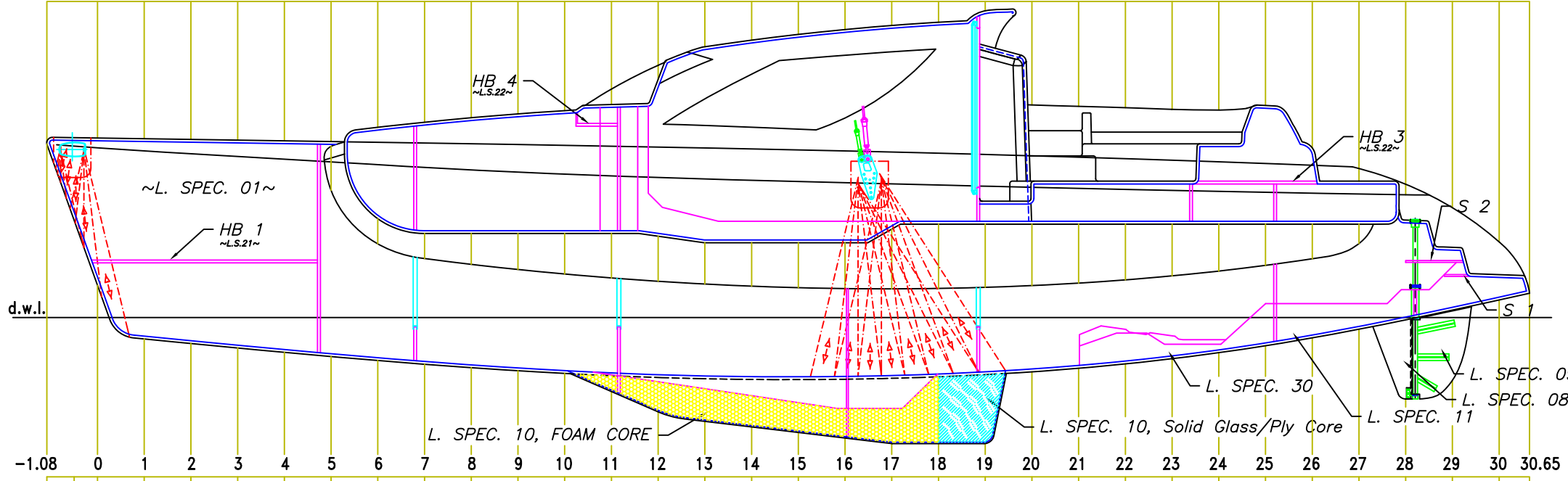
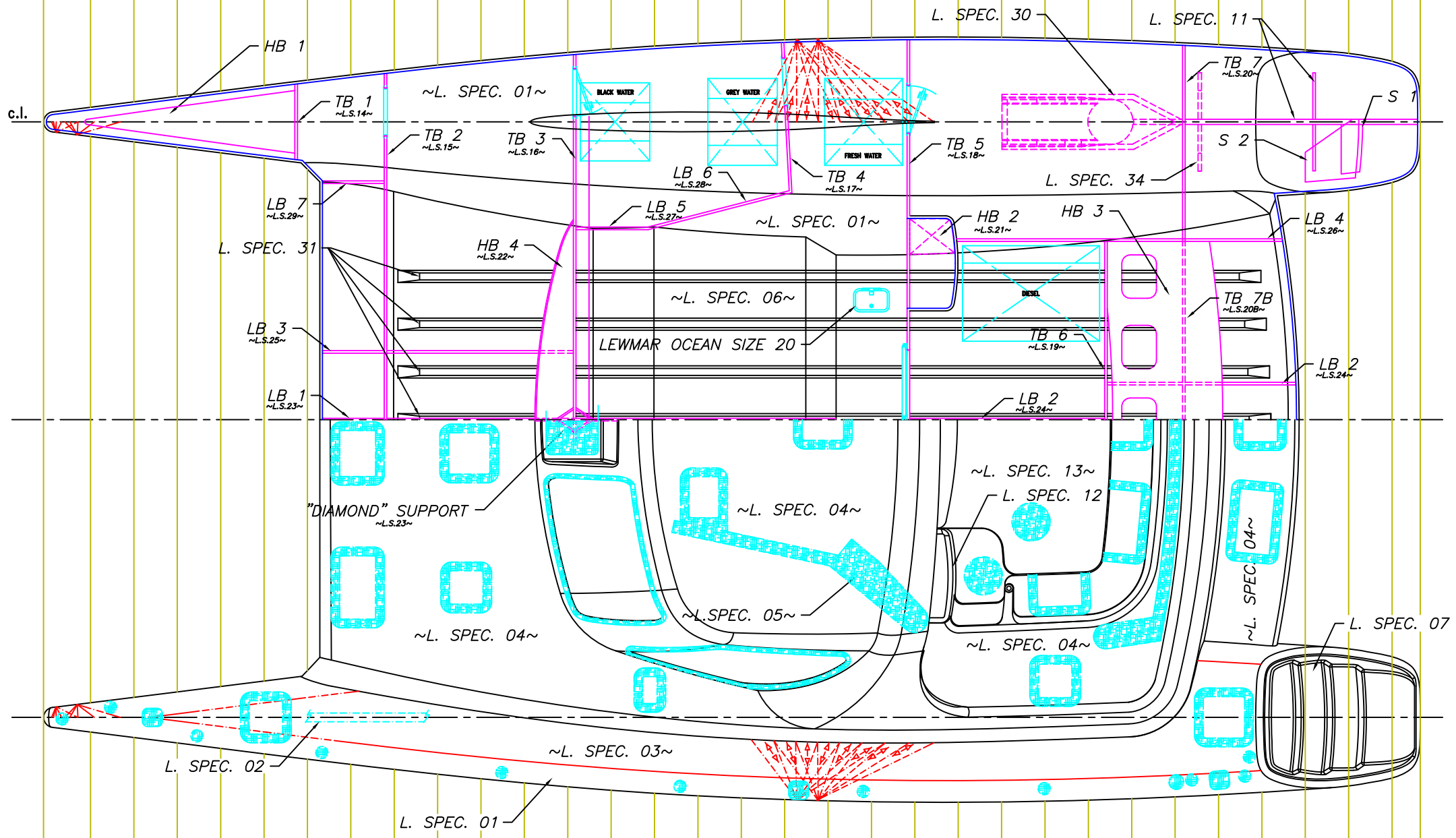
SOLIDS FOR DECK GEAR TO BE BUILT UP TO 10 MM IN GLASS ONLY
 OR ALTERNATIVELY A 12 MM PLYWOOD INSERT WITH THE SKIN AS IN LAMINATING SPECIFICATION No 05

TABBING OF ALL BULKHEADS AND BAFFLES IS TO BE DONE WITH NO LESS GLASS AS USED ON EITHER THE BULKHEAD OR THE SKIN IT IS ATTACHED TO.

TABBING IS TO START WITH SMALLER STRIPS AND INCREASE IN WIDTH WITH EACH LAYER. (INCREMENT OF BETWEEN 25 AND 40 MM . DEPENDING ON NUMBER OF LAYERS.

CUT OUTS IN HIGH LOAD BULKHEADS WILL NEED REINFORCING IN THE FORM OF CONNECTING THE TWO SKINS OF THE SANDWICH.
 THIS CAN BE DONE USING CSM ONLY.

DRAWN WITH A SKIN THICKNESS OF 30 mm.



-1.08 0 1 2 3 4 5 6 7 8 9 10 11 12 13 14 15 16 17 18 19 20 21 22 23 24 25 26 27 28 29 30 30.65

ISSUE	MODIFICATION	DATE	DRAWN
A	GENERAL UPDATE PRIOR TO FIRST ISSUE.	18/9/97	A.W.S.

THE BUILDER MUST CHECK DIMENSIONS AND CONTENT GIVEN ON THE DRAWING AND ADVISE THE DESIGNER OF ANY DISCREPANCIES BEFORE COMMENCING CONSTRUCTION. THIS DRAWING MUST NOT BE REPRODUCED OR USED FOR ANY OTHER PURPOSE OTHER THAN IN CONNECTION WITH THE BOAT OR DESIGN FOR WHICH IT WAS DRAWN, WITHOUT THE DESIGNER'S WRITTEN CONSENT.

ALL RIGHTS TO THIS WORK ARE RESERVED TO ASMA cc UNDER THE SOUTH AFRICAN COPYRIGHT ACT NO.98 OF 1978. IN TERMS OF THE COPYRIGHT ACT THIS WORK IS PROTECTED AS WELL AS ANY ADAPTATIONS MADE TO THE WORK ORIGINATED FROM THIS DRAWING. THE COST OF THESE PLANS INCLUDE ROYALTY FEES FOR ONE BOAT ONLY. NO ADDITIONAL BOATS OR ANY PART THEREOF SHALL BE BUILT FROM THESE PLANS OR TOOLING MADE ACCORDING TO THESE PLANS WITHOUT THE DESIGNER'S WRITTEN CONSENT AND PAYMENT OF FEES.

ALEXANDER SIMONIS
 NAVAL ARCHITECTS
 27 Mariner Drive, Woodbridge Island, 7441,
 Cape Town, South Africa P.O Box 263 Milnerton 7435
 Tel:+27-21-5513438 Fax: 5514812 Cell:+27-82-4910745
 E-mail: Internet asna@simonis.co.za
 Homepage: http://www.simonis.co.za

THIRD ANGLE PROJECTION PROJECT: **FOURCATS 52**

TITLE: **CONSTRUCTION PLAN & ELEV.**

COPYRIGHT ASMA cc. 1997
 DRAWN BY: N.F.B. DATE: AUG. '97 SCALE: 1:60 (A3) FILENAME: 98-200.DWG DES.NO.: 098 -DWG.NO.: 200

NO PART OF THIS DRAWING MAY BE REPRODUCED OR COPIED WITHOUT PRIOR WRITTEN PERMISSION BY ASMA cc.